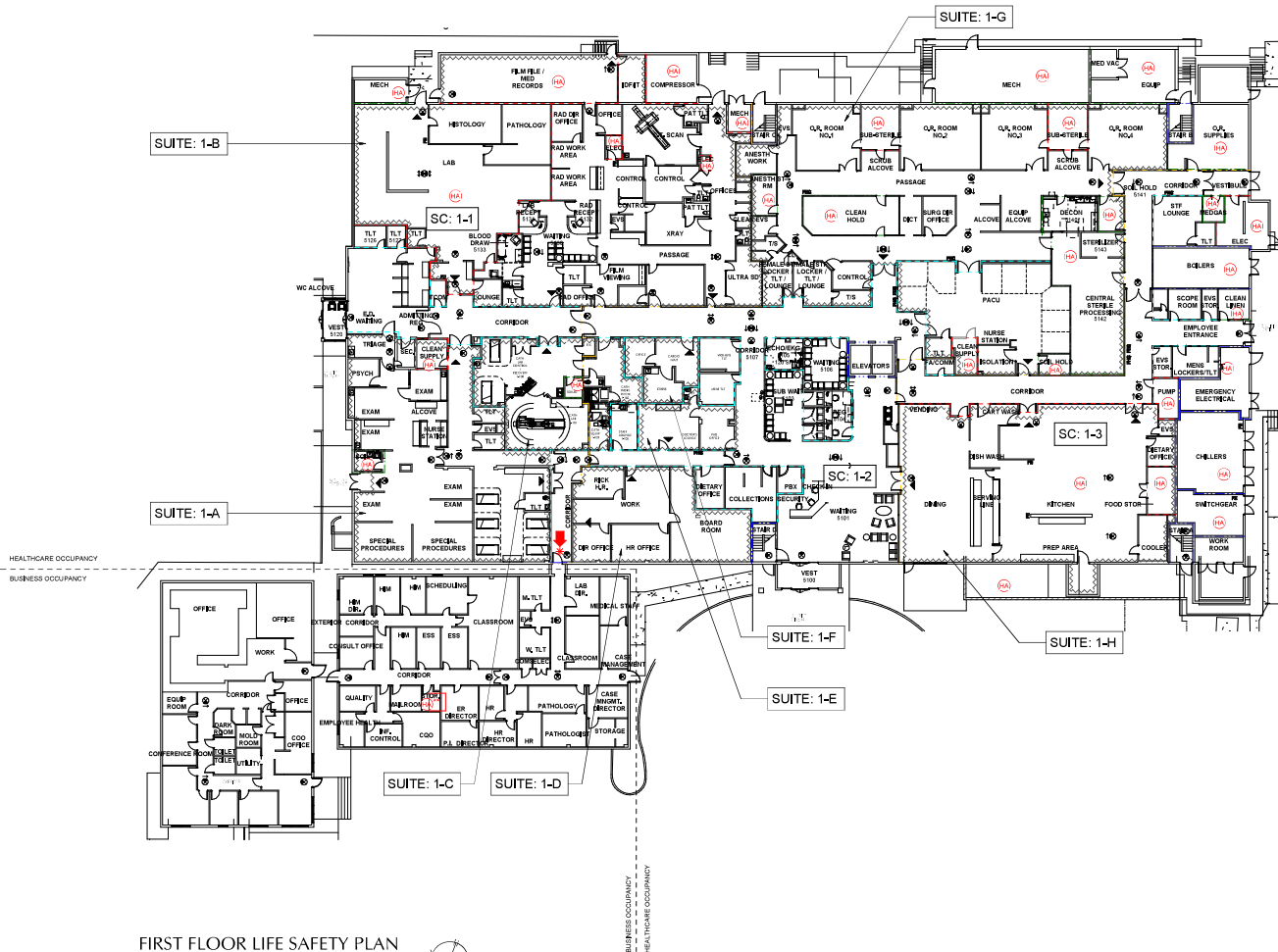


ATTACHMENT A. Floor Plan.



LIFE SAFETY HEALTHCARE OCCUPANCY - FIRST FLOOR						
Smoke Component	Total Sq. Footage	Occupancy	Approved Automatic Sprinkler System	Travel Distance to Exit	Travel Distance to Smoke Compartment	Comments
LKMC SC-1A	15665 SF	TREATMENT	YES	150'-0"	119'-0"	
LKMC SC-1C	20068 SF	TREATMENT	YES	150'-0"	127'-0"	
LKMC SC-1A	6254 SF	TREATMENT	YES	150'-0"	119'-0"	

LIFE SAFETY SUITE SCHEDULE - FIRST FLOOR				
SUITE NUMBER	TOTAL SQ. FOOTAGE	AREA DESCRIPTION	# of REMOTE SUITE ACCESS DOORS	SUITE TYPE
LKMC SUITE 1A	3914 SF	EMERGENCY DEPARTMENT	3	NON-SLEEPING
LKMC SUITE 1B	8777 SF	LAB RADIOLOGY	5	NON-SLEEPING
LKMC SUITE 1C	1154 SF	CATH LAB	1	NON-SLEEPING
LKMC SUITE 1D	1443 SF	BUSINESS OFFICE	2	NON-SLEEPING
LKMC SUITE 1E	475 SF	STAFF LOUNGE	1	NON-SLEEPING
LKMC SUITE 1F	453 SF	STRESS	1	NON-SLEEPING
LKMC SUITE 1G	8114 SF	SURGERY PACU	3	NON-SLEEPING
LKMC SUITE 1H	4482 SF	DINING KITCHEN	3	NON-SLEEPING



FIRST FLOOR LIFE SAFETY PLAN

## WALL LEGEND

- SMOKE PARTITION
- 1 HOUR FIRE BARRIER
- SMOKE BARRIER
- 2 HOUR FIRE BARRIER

THIS LIFE SAFETY EVALUATION SHOWS INFORMATION PERTAINING TO THE 2012 NFPA 101 LIFE SAFETY CODE ONLY. THESE PLANS ARE FOR USE IN JOINT COMMISSION SURVEYS AND DOES NOT INCLUDE ADOPTED BUILDING CODE REQUIREMENTS.

NOTE: NON-SLEEPING SUITES MUST BE UNDER 10,000 SQUARE FEET. SLEEPING SUITES MUST BE UNDER 7,500 SQUARE FEET. THE PERIMETER WALLS OF SUITES MUST BE A MINIMUM OF 2 INCHES THICK CONCRETE OR EQUIVALENT. IF SLEEPING SUITES ARE MORE THAN 1,000 SQUARE FEET, OR NON-SLEEPING SUITES ARE MORE THAN 2,000 SQUARE FEET, 2 EXITS MUST BE PROVIDED FROM THE SUITE TO AN EXIT ACCESS CORRIDOR. OCCUPANTS OF THE BUILDING MAY NOT EXIT THE BUILDING THROUGH A SUITE. THE HOSPITAL MUST VERIFY THAT NO EXIT SIGNS DIRECT OCCUPANTS THROUGH A SUITE IN THIS MANNER. REFER TO CHAPTER 10 SECTION 10.2.2 OF NFPA 101 FOR FURTHER SUITE REQUIREMENTS IN HOSPITALS.

## SYMBOLS LEGEND

- SUITE BOUNDARY
- HORIZONTAL EXIT
- HAZARDOUS AREA
- SUITE EXIT
- EXIT SIGN
- EXITING CEILING SHALL BE USED AS THE BARRIER TO LIMIT THE PASSAGE OF SMOKE
- RATED EXIT PASSAGE
- UNSPRINKLERED AREA

## BUILDING CONSTRUCTION TYPE: I (332)

THE FOLLOWING CODE REFERENCES PERTAINING TO HAZARDOUS AREAS IN BUSINESS OCCUPANCY ARE DERIVED FROM THE 2012 EDITION OF NFPA 101:

36.1.3 THE CONTENTS OF BUSINESS OCCUPANCY SHALL BE CLASSIFIED AS ORDINARY HAZARD IN ACCORDANCE WITH SECTION 6.2.

6.2.2.3 ORDINARY HAZARD CONTENTS SHALL BE CLASSIFIED AS THOSE LIKELY TO BURN WITH MODERATE RAPIDITY OR TO OIL OFF A CONSIDERABLE VOLUME OF SMOKE.

36.2.1 HAZARDOUS AREAS SHALL BE PROTECTED IN ACCORDANCE WITH SECTION 6.7.

6.7.1.1 PROTECTION FROM ANY AREA HAVING A DEGREE OF HAZARD GREATER THAN THAT NORMAL TO THE GENERAL OCCUPANCY OF THE BUILDING SHALL BE PROTECTED BY ONE OF THE FOLLOWING MEANS:

(1) ENCLOSING THE AREA WITH A FIRE BARRIER WITHOUT WINDOWS THAT HAS A 1-HOUR FIRE RESISTANCE RATING IN ACCORDANCE WITH SECTION 6.3

(2) PROTECTING THE AREA WITH AUTOMATIC EXTINGUISHING SYSTEMS IN ACCORDANCE WITH SECTION 9.7

DUE TO THE ABOVE CODE REFERENCES, A PORTION OF THE HAZARDOUS AREAS IN THE BUILDING (BUSINESS OCCUPANCY) ARE PROTECTED WITH SPRINKLERS PER 8.7.1.1.2. WALL RATINGS ARE NOT REQUIRED UNDER THIS PROVISION.

LKMC GROSS BUILDING AREA		
Occupancy Type	Area	
LKMC BUSINESS	6376 SF	
LKMC HEALTHCARE	6597 SF	
Grand Total	9575 SF	

LKMC GROSS BUILDING SF		
Occupancy Type	Area	
LKMC LEVEL 01		
LKMC BUSINESS	6376 SF	
LKMC HEALTHCARE	4728 SF	
LKMC LEVEL 02		
LKMC HEALTHCARE	11068 SF	
LKMC LEVEL 03		
LKMC HEALTHCARE	10068 SF	
Grand Total	95975 SF	

## LOWER KEYS MEDICAL CENTER LIFE SAFETY ASSESSMENT KEY WEST, FLORIDA

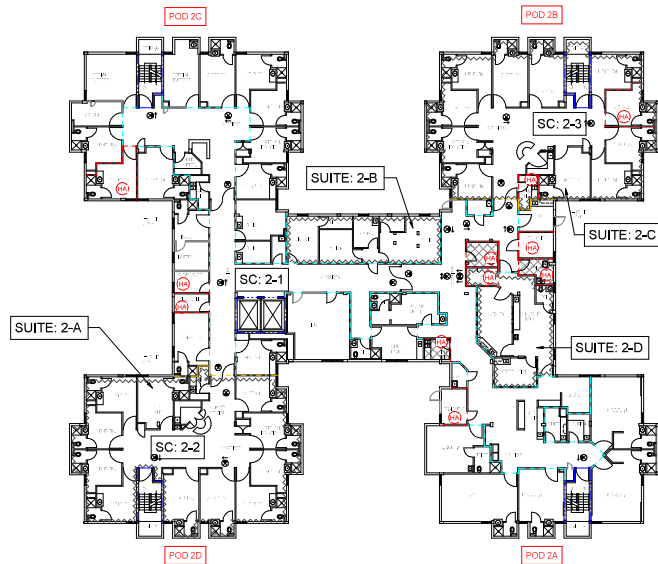
## REVISIONS

DR. BY	GJ
CK. BY	DU
PROJ. NO.	A07821
DATE	12/17/2025

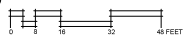
LKMC FIRST FLOOR  
LIFE SAFETY PLAN

LS101





1 SECOND FLOOR LIFE SAFETY PLAN



EXISTING HEALTHCARE OCCUPANCY - SECOND FLOOR						
Smoke Compartment	Total Sq. Footage	Occupancy Use	Approved Automatic Sprinkler System	Travel Distance to Exit	Travel Distance to Smoke Compartment	COMMENTS
LKMC SC 2-1	12176 SF TREATMENT	YES	YES	131'-0"	144'-0"	
LKMC SC 2-2	3008 SF TREATMENT	YES	YES	52'-0"	71'-0"	
LKMC SC 2-3	1181 SF TREATMENT	YES	YES	52'-0"	71'-0"	

LIFE SAFETY SUITE SCHEDULE - SECOND FLOOR				
SUITE NUMBER	TOTAL SQ. FOOTAGE	AREA DESCRIPTION	# OF REMOTE EXIT ACCESS DOORS	SUITE TYPE
LKMC SUITE 2-A	3004 SF	MED / SURG	2	SLEEPING
LKMC SUITE 2-B	173 SF	OFFICE	1	NON-SLEEPING
LKMC SUITE 2-C	2693 SF	MED / SURG	2	SLEEPING
LKMC SUITE 2-D	782 SF	NURSERY	2	SLEEPING

## WALL LEGEND

- CORRIDOR WALL
- SMOKE PARTITION
- 1 HOUR FIRE BARRIER
- SMOKE BARRIER
- 2 HOUR FIRE BARRIER

THIS LIFE SAFETY EVALUATION SHOWS INFORMATION PERTAINING TO THE 2012 NFPA 101 LIFE SAFETY CODE ONLY. THESE PLANS ARE FOR USE IN JOINT COMMISSION SURVEYS AND DOES NOT INCLUDE ADOPTED BUILDING CODE REQUIREMENTS.

NOTE: NON-SLEEPING SUITES MUST BE UNDER 10,000 SQUARE FEET. SLEEPING SUITES MUST BE UNDER 7,500 SQUARE FEET. THE PERIMETER WALLS OF SUITES MUST BE A MINIMUM OF SMOKE TIGHT WALL CONSTRUCTION (HOSPITAL TO VERIFY). IF SLEEPING SUITES ARE MORE THAN 1,000 SQUARE FEET, OR NON-SLEEPING SUITES ARE MORE THAN 2,500 SQUARE FEET, SUITES MUST BE PROVIDED FROM THE SUITE TO AN EXIT ACCESS CORRIDOR. OCCUPANTS OF THE BUILDING MAY NOT EXIT THE BUILDING THROUGH A SUITE. THE HOSPITAL MUST VERIFY THAT NO EXIT SIGNS DIRECT OCCUPANTS THROUGH A SUITE IN THIS MANNER. REFER TO CHAPTER 10 SECTION 10.2.2 OF NFPA 101 FOR FURTHER SUITE REQUIREMENTS IN HOSPITALS.

## SYMBOLS LEGEND

- SUITE BOUNDARY
- HORIZONTAL EXIT
- HAZARDOUS AREA
- SUITE EXIT
- EXIT SIGN
- EXISTING CEILING SHALL BE USED AS THE BARRIER TO LIMIT THE PASSAGE OF SMOKE
- RATED EXIT PASSAGE
- UNSPRINKLERED AREA

BUILDING CONSTRUCTION TYPE: I (332)

LKMC GROSS BUILDING AREA	
Occupancy Type	Area
LKMC BUSINESS	1036 SF
LKMC HEALTHCARE	8907 SF
Grand total	9943 SF

LKMC GROSS BUILDING SF	
Occupancy Type	Area

LKMC LEVEL 01	5076 SF
LKMC BUSINESS	1036 SF
LKMC HEALTHCARE	4728 SF

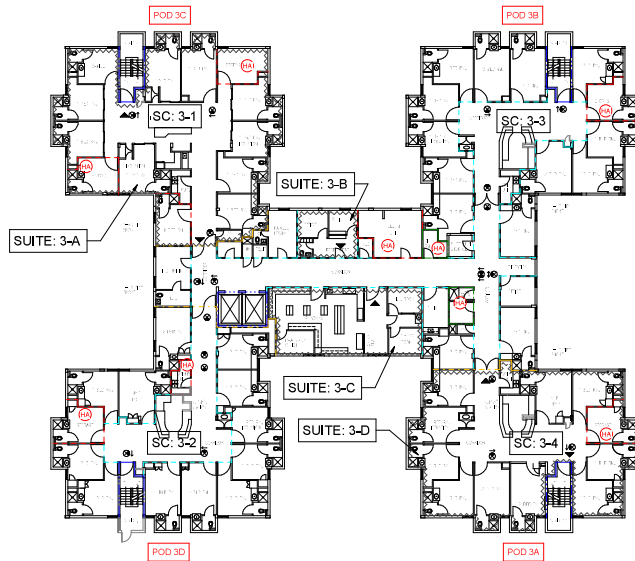
LKMC LEVEL 02	5690 SF
LKMC HEALTHCARE	11658 SF

LKMC LEVEL 03	19600 SF
LKMC HEALTHCARE	11658 SF

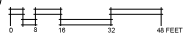
Grand total	9943 SF
-------------	---------

EXISTING HEALTHCARE OCCUPANCY - THIRD FLOOR						
Smoke Compartment	Total Sq. Footage	Occupancy Use	Approved Automatic Sprinkler System	Travel Distance to Exit	Travel Distance to Smoke Compartment	COMMENTS
LKMC SC 3-1	12176 SF TREATMENT	YES	YES	131'-0"	144'-0"	
LKMC SC 3-2	3008 SF TREATMENT	YES	YES	52'-0"	71'-0"	
LKMC SC 3-3	1181 SF TREATMENT	YES	YES	52'-0"	71'-0"	

LIFE SAFETY SUITE SCHEDULE - THIRD FLOOR				
SUITE NUMBER	TOTAL SQ. FOOTAGE	AREA DESCRIPTION	# OF REMOTE EXIT ACCESS DOORS	SUITE TYPE
LKMC SUITE 3-A	3051 SF	MED / SURG	2	SLEEPING
LKMC SUITE 3-B	283 SF	OFFICE	1	NON-SLEEPING
LKMC SUITE 3-C	1002 SF	PHARMACY	2	NON-SLEEPING
LKMC SUITE 3-D	3008 SF	MED / SURG	2	SLEEPING



2 THIRD FLOOR LIFE SAFETY PLAN



LOWER KEYS MEDICAL CENTER  
LIFE SAFETY ASSESSMENT  
KEY WEST, FLORIDA

## REVISIONS

NO.	DESCRIPTION	DATE

DR. BY	GJ
CK. BY	DU
PROJ. NO.	A67821
DATE	12/17/2025
LKMC SECOND & THIRD FLOOR LIFE SAFETY PLAN	

LS102